

Important update if travelling via the SE Freeway to get to Mt Pleasant.

There will be **speed restrictions and outbound lane closures on the SE Freeway at Crafers** due to roadworks. Outbound traffic will be reduced to one lane at various times. Please allow additional travel time if using this route.

Please Scroll Down and [Click here](#) for more information.

We look forward to seeing you all on Sunday.

The Bike SA Team

South Eastern Freeway Pavement Rehabilitation – Crafers West to Crafers

Weekend works and changed traffic conditions

Stage 6 weekend works

Works to complete stage 6 of pavement rehabilitation will be undertaken continuously over the weekend from **7pm Friday, 15 October until 6am Monday, 18 October 2021, weather permitting**. Work will be occur on the outbound lanes of the freeway, from Crafers West to just east of the Crafers Interchange.

Planned traffic changes

To safely undertake these works, the following traffic arrangements will be in place:

Outbound and citybound lanes from just west of Measday Bridge to just east of the Crafers Interchange

- the outbound lanes will be temporarily closed during the weekend works;
- vehicles will be directed onto the opposite side of the freeway to travel outbound; and
- one lane of traffic will operate in the outbound direction and two lanes will operate in the citybound direction.

Mount Barker Road outbound on-ramp at Crafers West

- temporarily closed during the weekend works; and
- vehicles will need to travel west on Mount Barker Road and use the inbound on-ramp at Leawood Gardens to access the freeway and then use the Mount Osmond off-ramp to turn around and travel back in an outbound direction on the freeway.

Outbound Crafers Interchange off-ramp (entry to Crafers) closed

- temporarily closed during the weekend works; and
- vehicles will need to continue travelling outbound on the freeway, use the Stirling Interchange and either re-enter the freeway citybound to then use the Crafers Interchange or alternatively, vehicles can turn left at the roundabout onto Pomona Road, then left onto Gould Road, then continue into Crafers via Old Mount Barker Road.

Citybound travel

- speeds for citybound light and heavy vehicles will be restricted to 40km/h from east of the Crafers Interchange to just west of Measday Bridge.

Outbound travel

- speeds for outbound light and heavy vehicles will be restricted to 40km/h from just west of Measday Bridge until just east of the Crafers Interchange.

Bus stops on the freeway, including the Crafers Interchange stops will not be impacted, however bus patrons and commuters should expect delays.

Heavy vehicles (permit restrictions may apply), including buses, will have access on the freeway throughout the works, with the lower and upper safety ramps available at all times.

Important information for heavy vehicles

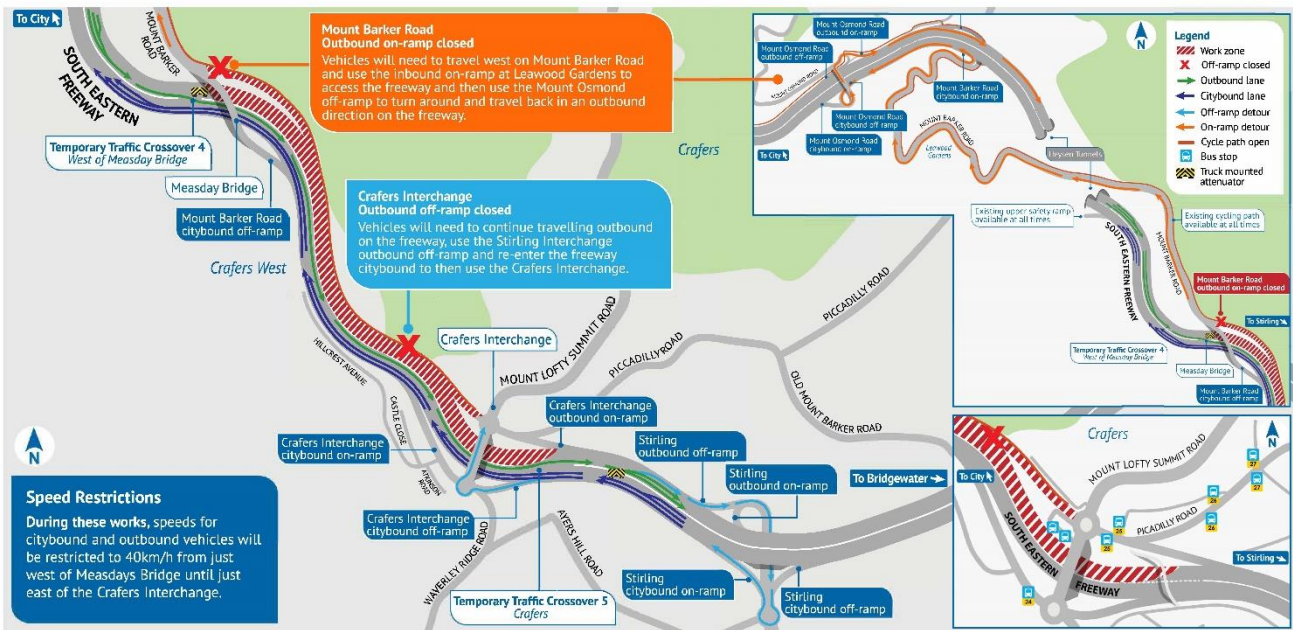
Heavy vehicles greater than 3.4 metres wide are currently not permitted to travel in either direction on the South Eastern Freeway between the Glen Osmond Tollgate and the Stirling Interchange without a permit.

Where travel is not permitted, the detour is via Old Princes Highway, Karoonda Highway, Burdett Road, Bowhill Road (Council road), Morell Road Bowhill (Council road), Hunter Road, Stott Highway Swan Reach, Hunter Road to Sturt Highway Blanchetown (and vice versa).

Heavy Vehicle operators may apply for permits to travel with widths greater than 3.4 metres or oversize and over mass requirements. Please contact the National Heavy Vehicle Regulator (NHVR) directly to apply for this permit, website www.nhvr.gov.au

Crafers West to Crafers Interchange, outbound lanes

Weekend traffic restrictions: 7pm Friday, 15 October – 6am Monday, 18 October 2021



www.dit.sa.gov.au/SEFreeway
 1300 103 456
 Follow us on:
 f t i



Further information

For more information on the project or to register for project updates, please contact the project team via:

- visit: www.dit.sa.gov.au/SEFreeway
- email: dit.communityrelations@sa.gov.au
- telephone: 1300 103 456
- SitePodium: stay up to date with the project via the SitePodium app, visit www.dit.sa.gov.au/sefreeway for details on how to download the app.
- Addinsight: get real-time traffic alerts whilst you are driving with the Addinsight smartphone app, visit www.addinsight.com.au

The Department appreciates your patience and cooperation while these important works are undertaken.

Kind Regards

South Eastern Freeway Pavement Rehabilitation Project Team